

**VICE PRESIDENT FOR  
RESEARCH AND INNOVATION –  
RESEARCH ADMINISTRATION  
As of July 1, 2024**

**President**  
M. I. Kotlikoff (Interim)

**Provost**  
J. A. Siliciano (Interim)

**Vice President for  
Research and Innovation\***  
K. J. Van Vliet

**Associate Vice Provost**  
H. Aguilar-Carreno

**Associate Vice Provost**  
N. Bazarova

**Associate Vice Provost**  
M. van der Meulen

**Executive Staff Assistant**  
Vacant

**Chief Administrative  
Officer**  
K. Furr

**Research**

<b>Office of Sponsored Programs</b> M. M. Klempa	<b>Office of Research Integrity and Assurance</b> M. Hurwitz	<b>Cornell Animal Research and Education</b> E. Daugherity
---	---	---

**Sr. Admin Asst. &  
Event Coordinator**  
S. Blinn

**Innovation**

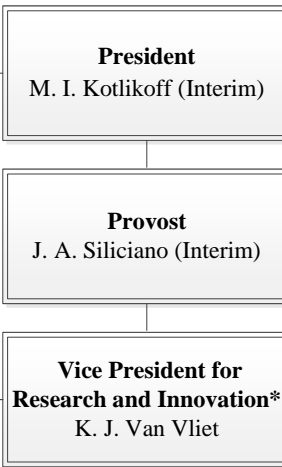
<b>Corporate Engagement</b> Vacant	<b>Center for Technology and Licensing</b> A. Li and L. Placancia	<b>Center for Life Science Ventures</b> L. Walcer	<b>PRAXIS Center for Development</b> R. Scharf	<b>Center for Regional Economic Advancement</b> T. P. Schryver
---------------------------------------	--	--	---	---

**Operations**

<b>Finance and Budget</b> J. Phelps	<b>Facilities</b> T. Pfeiffer	<b>Research Administration Information Services</b> Z. Jacques	<b>Human Resources</b> W. Smith	<b>Communications</b> Vacant
--	----------------------------------	---	------------------------------------	---------------------------------

\* Dual reports to Michael Kotlikoff, Interim President.

**VICE PRESIDENT FOR  
RESEARCH AND INNOVATION  
As of July 1, 2024**



**Associate Vice Provost:**  
H. Aguilar-Carreno

**Institute for Biotechnology:** M. DeLisa

**Center for Vertebrate Genomics:** P. Sethupathy

**Cornell Stem Cell Program:** B. Cosgrove

**Weill Institute for Cell and Molecular Biology:**  
M. Smolka (Interim)

**Myalgic Encephalomyelitis/Chronic Fatigue Syndrome  
Collaborative Center:** M. Hanson

**Cornell Center for Antimicrobial Resistance Research:**  
K. Y. Rhee and C. Altier

**Cornell Reproductive Sciences Center:** P. Cohen

**Cornell Institute for Digital Agriculture:** TBD

**Center for Research on Programmable Plant Systems:**  
A. Stroock

**Center for Structural Biology:** B. Crane

**Center for Immunology:** D. Fowell

**Cornell Center for Proteomics:** H. Yu

**Point of Care Technologies Center (PORTENT):** D. Erikson

**Associate Vice Provost:**  
N. Bazarova

**Center for Applied Math:** D. Bindel

**Center for Advanced Computing:** R. Knepper

**Center for Data Science for Enterprise and Society:**  
D. Shmoys

**Atkinson Center for a Sustainable Future:** D. Lodge

**Roper Center for Public Opinion Research:**  
J. Schuldt

**Cornell Center for Social Sciences:** P. Enns

**Associate Vice Provost:**  
M. van der Meulen

**Laboratory for Elementary Particles Physics:** P. Wittich

**Laboratory of Atomic and Solid State Physics:**  
K. Shen

**Cornell Center for Astrophysics and Planetary Science:**  
A. Hayes

**Cornell High Energy Synchrotron Source:** J. D. Brock

**Cornell Laboratory for Accelerator-based Science &  
Education:** N. Lockyer

**Center for Bright Beams:** R. Patterson

**Cornell Center for Material Research:** F. Wise

**Cornell Nanoscale Facility:** J. Cha

**Center for Alkaline-Based Energy Solutions:** H. Abruna

**Kavli Institute at Cornell for NanoScale Science:**  
D. Muller and D. Ralph

**Air Force Research Lab Mid-Atlantic Hub Network:**  
E. Giannelis

**Superior Energy-Efficient Materials and Devices  
(SUPREME):** H. G. Xing

\* Dual reports to Michael Kotlikoff, Interim President