

**VICE PRESIDENT FOR
RESEARCH AND INNOVATION –
RESEARCH ADMINISTRATION
As of January 1, 2025**

President
M. I. Kotlikoff (Interim)

Provost
K. Bala

**Vice President for
Research and Innovation***
K. J. Van Vliet

Associate Vice Provost
H. Aguilar-Carreno

Associate Vice Provost
N. Bazarova

Associate Vice Provost
M. van der Meulen

Executive Staff Assistant
Vacant

**Chief Administrative
Officer**
K. Furr

Research

Office of Sponsored Programs M. M. Klempa	Office of Research Integrity and Assurance M. Hurwitz	Cornell Animal Research and Education E. Daugherity
---	---	---

**Sr. Admin Asst. &
Event Coordinator**
S. Blinn

Innovation

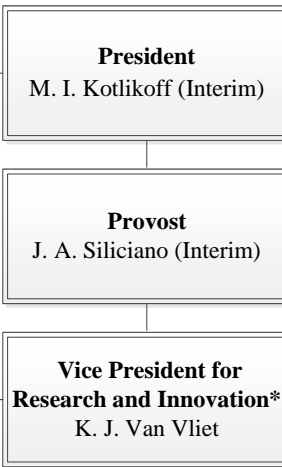
Corporate Engagement Vacant	Center for Technology and Licensing A. Li and L. Placancia	Center for Life Science Ventures L. Walcer	PRAXIS Center for Development R. Scharf	Center for Regional Economic Advancement T. P. Schryver
---------------------------------------	--	--	---	---

Operations

Finance and Budget J. Phelps	Facilities T. Pfeiffer	Research Administration Information Services Z. Jacques	Human Resources W. Smith	Communications Vacant
--	----------------------------------	---	------------------------------------	---------------------------------

* Dual reports to Michael Kotlikoff, Interim President.

**VICE PRESIDENT FOR
RESEARCH AND INNOVATION
As of July 1, 2024**



Associate Vice Provost:
H. Aguilar-Carreno

Institute for Biotechnology: M. DeLisa

Center for Vertebrate Genomics: P. Sethupathy

Cornell Stem Cell Program: B. Cosgrove

Weill Institute for Cell and Molecular Biology:
M. Smolka (Interim)

**Myalgic Encephalomyelitis/Chronic Fatigue Syndrome
Collaborative Center:** M. Hanson

Cornell Center for Antimicrobial Resistance Research:
K. Y. Rhee and C. Altier

Cornell Reproductive Sciences Center: P. Cohen

Cornell Institute for Digital Agriculture: TBD

Center for Research on Programmable Plant Systems:
A. Stroock

Center for Structural Biology: B. Crane

Center for Immunology: D. Fowell

Cornell Center for Proteomics: H. Yu

Point of Care Technologies Center (PORTENT): D. Erikson

Associate Vice Provost:
N. Bazarova

Center for Applied Math: D. Bindel

Center for Advanced Computing: R. Knepper

Center for Data Science for Enterprise and Society:
D. Shmoys

Atkinson Center for a Sustainable Future: D. Lodge

Roper Center for Public Opinion Research:
J. Schuldt

Cornell Center for Social Sciences: P. Enns

Associate Vice Provost:
M. van der Meulen

Laboratory for Elementary Particles Physics: P. Wittich

Laboratory of Atomic and Solid State Physics:
K. Shen

Cornell Center for Astrophysics and Planetary Science:
A. Hayes

Cornell High Energy Synchrotron Source: J. D. Brock

**Cornell Laboratory for Accelerator-based Science &
Education:** N. Lockyer

Center for Bright Beams: R. Patterson

Cornell Center for Material Research: F. Wise

Cornell Nanoscale Facility: J. Cha

Center for Alkaline-Based Energy Solutions: H. Abruna

Kavli Institute at Cornell for NanoScale Science:
D. Muller and D. Ralph

Air Force Research Lab Mid-Atlantic Hub Network:
E. Giannelis

**Superior Energy-Efficient Materials and Devices
(SUPREME):** H. G. Xing

* Dual reports to Michael Kotlikoff, Interim President