

**VICE PRESIDENT FOR
RESEARCH AND INNOVATION –
RESEARCH ADMINISTRATION
As of January 1, 2025**

President
M. I. Kotlikoff (Interim)

Provost
K. Bala

**Vice President for
Research and Innovation***
K. J. Van Vliet

Associate Vice Provost
H. Aguilar-Carreno

Associate Vice Provost
N. Bazarova

Associate Vice Provost
M. van der Meulen

Executive Staff Assistant
Vacant

**Chief Administrative
Officer**
K. Furr

Research

<p>Office of Sponsored Programs M. M. Klempa</p>	<p>Office of Research Integrity and Assurance M. Hurwitz</p>	<p>Cornell Animal Research and Education E. Daugherity</p>
---	---	---

**Sr. Admin Asst. &
Event Coordinator**
S. Blinn

Innovation

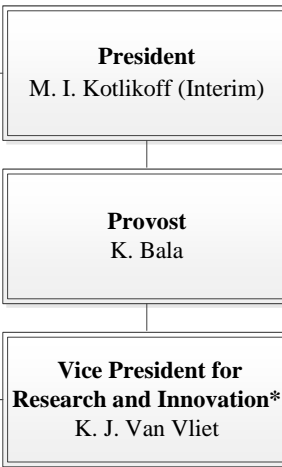
<p>Corporate Engagement Vacant</p>	<p>Center for Technology and Licensing A. Li and L. Placancia</p>	<p>Center for Life Science Ventures L. Walcer</p>	<p>PRAXIS Center for Development R. Scharf</p>	<p>Center for Regional Economic Advancement T. P. Schryver</p>
---	--	--	---	---

Operations

<p>Finance and Budget J. Phelps</p>	<p>Facilities T. Pfeiffer</p>	<p>Research Administration Information Services Z. Jacques</p>	<p>Human Resources W. Smith</p>	<p>Communications Vacant</p>
--	--	---	--	---

* Dual reports to Michael Kotlikoff, Interim President.

**VICE PRESIDENT FOR
RESEARCH AND INNOVATION
As of January 1, 2025**



Associate Vice Provost:
H. Aguilar-Carreno

Institute for Biotechnology: M. DeLisa

Center for Vertebrate Genomics: P. Sethupathy

Cornell Stem Cell Program: B. Cosgrove

Weill Institute for Cell and Molecular Biology:
M. Smolka (Interim)

**Myalgic Encephalomyelitis/Chronic Fatigue Syndrome
Collaborative Center:** M. Hanson

Cornell Center for Antimicrobial Resistance Research:
K. Y. Rhee and C. Altier

Cornell Reproductive Sciences Center: P. Cohen

Cornell Institute for Digital Agriculture: TBD

Center for Research on Programmable Plant Systems:
A. Stroock

Center for Structural Biology: B. Crane

Center for Immunology: D. Fowell

Cornell Center for Proteomics: H. Yu

Point of Care Technologies Center (PORTENT): D. Erikson

Associate Vice Provost:
N. Bazarova

Center for Applied Math: D. Bindel

Center for Advanced Computing: R. Knepper

Center for Data Science for Enterprise and Society:
D. Shmoys

Atkinson Center for a Sustainable Future: D. Lodge

Roper Center for Public Opinion Research:
J. Schuldt

Cornell Center for Social Sciences: P. Enns

Associate Vice Provost:
M. van der Meulen

Laboratory for Elementary Particles Physics: P. Wittich

Laboratory of Atomic and Solid State Physics:
K. Shen

Cornell Center for Astrophysics and Planetary Science:
A. Hayes

Cornell High Energy Synchrotron Source: J. D. Brock

**Cornell Laboratory for Accelerator-based Science &
Education:** N. Lockyer

Center for Bright Beams: R. Patterson

Cornell Center for Material Research: F. Wise

Cornell Nanoscale Facility: J. Cha

Center for Alkaline-Based Energy Solutions: H. Abruna

Kavli Institute at Cornell for NanoScale Science:
D. Muller and D. Ralph

Air Force Research Lab Mid-Atlantic Hub Network:
E. Giannelis

**Superior Energy-Efficient Materials and Devices
(SUPREME):** H. G. Xing

* Dual reports to Michael Kotlikoff, Interim President