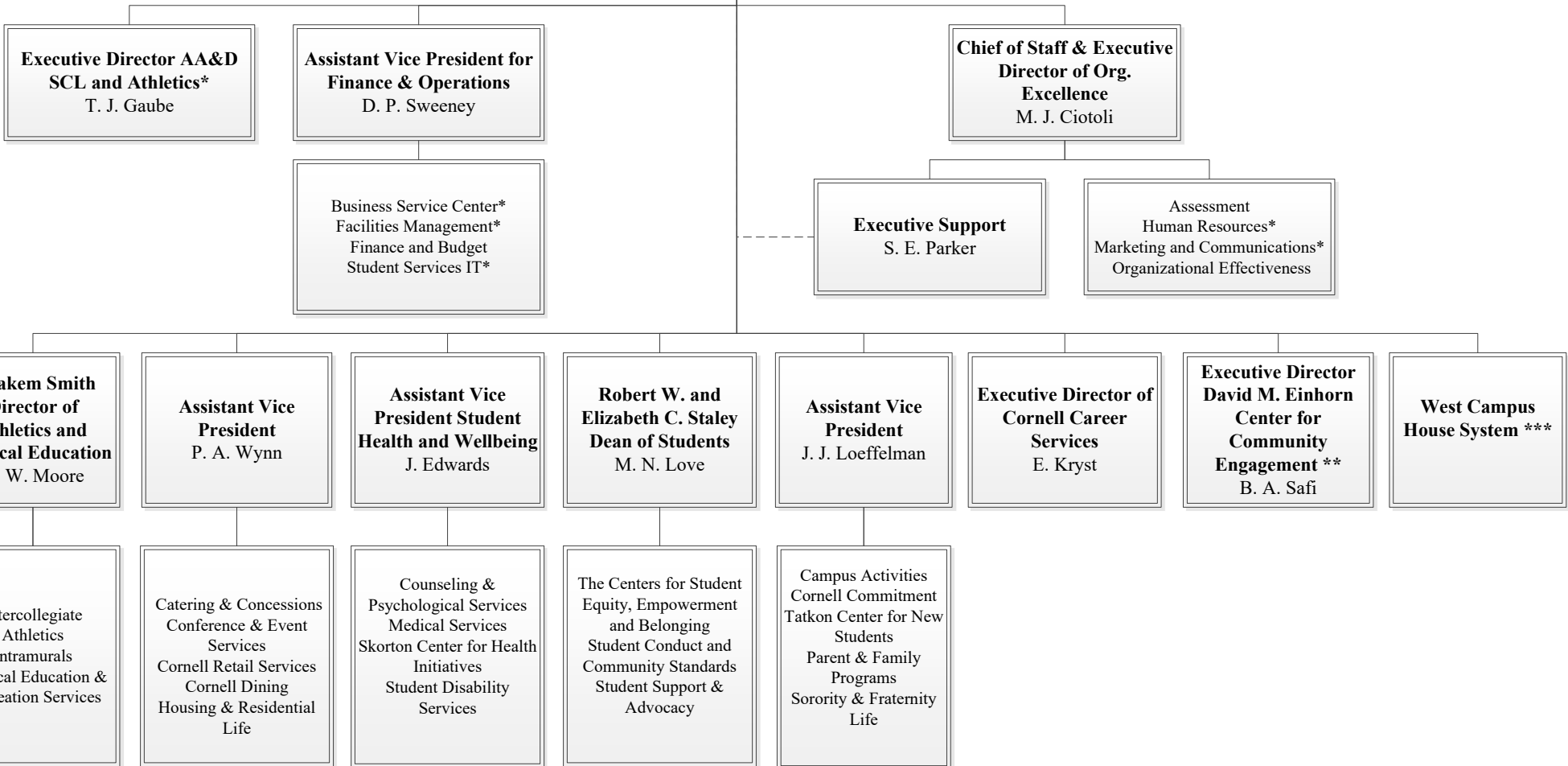


**VICE PRESIDENT FOR
STUDENT AND CAMPUS LIFE
As of March 21, 2025**

President
M. I. Kotlikoff

**Vice President for
Student and Campus Life**
R. T. Lombardi



* Dual reports to respective Vice President.

** Dual reports to Vice Provost for Engagement and Land-Grant Affairs.

*** Dual reports to Vice Provost for Undergraduate Education.